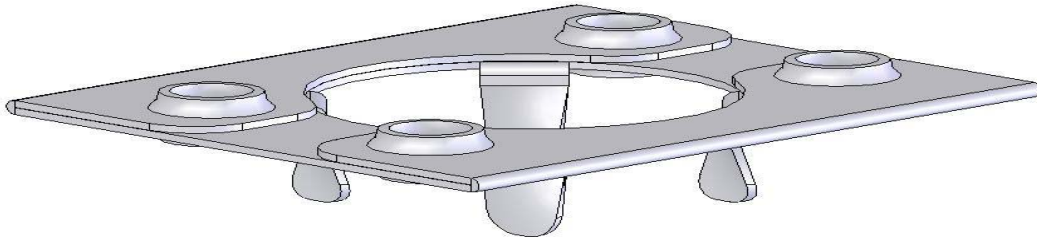


## Wiley Electronics LLC Washer, Electrical Equipment Bonding (WEEB)

The WEEB is a device for bonding PV modules to a mounting structure. The WEEB is designed to provide a reliable electrical connection between anodized aluminum pieces. In use, the WEEB is inserted between the PV module and mount at the clamping points, or at the bolted connections.



**Figure 1. WEEB-9.5**

### Assembly:

Press one WEEB-9.5 into two of the four 9.5mm (3/8 inch) holes in the mounting structure (WEEB-11.5 fits 7/16 inch holes, may need 1 or 2 per module). The retaining fingers will keep the WEEBs from falling out while the PV module is aligned to the mount. Each of the two WEEB-9.5s should contact a different mounting member. Insert 1/4-28 bolts and tighten until the dimples are completely embedded and the two aluminum pieces are flat against the body of the WEEB. A large washer will help to embed the dimples when using thin or malleable metals. The embedded dimples will make a gas-tight mechanical connection and thus ensure good electrical connection.

- Material: 304 stainless steel
- Listed to UL467 by ETL
- Outdoor Rated
- Maximum electrical equipment ground conductor size when used with 2 WEEBs contacting each module in an assembly: 6 AWG

Model number:	WEEB-9.5	For 1/4 inch bolted connections
	WEEB-9.5NL	Without retaining fingers, up to 3/8 inch bolted connections
	WEEB-11.5	For higher currents, up to 3/8 in bolted connection