

# REC TWINPEAK 2S 72 SERIES

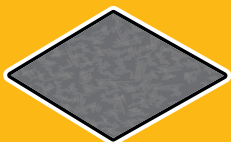
## PREMIUM SOLAR PANELS 100% MADE IN SINGAPORE

REC TwinPeak 2S 72 Series solar panels feature an innovative design with high efficiency and an industry-leading lightweight, yet robust construction, enabling customers to get the most out of the installation area.

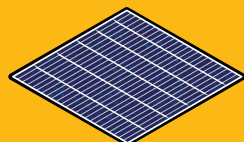
Combined with the product quality and reliability of a strong and established European brand, REC TwinPeak 2S 72 panels are ideal for commercial rooftops worldwide.



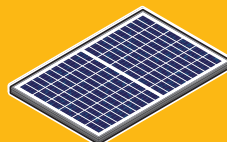
## INTEGRATED MANUFACTURING IN SINGAPORE



WAFERS



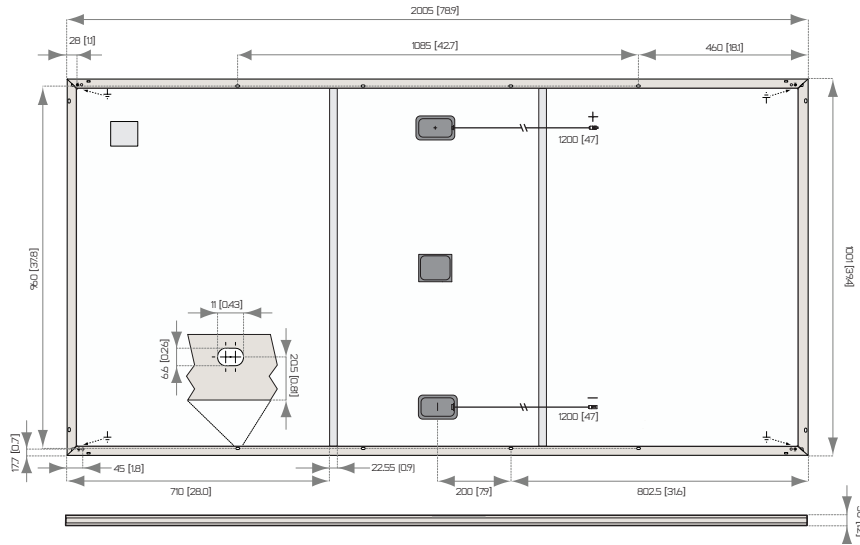
CELLS



MODULES



# REC TWINPEAK 25 72 SERIES



## ELECTRICAL DATA @ STC

Product Code\*: RECxxxTP25 72

	330	335	340	345	350	355
Nominal Power - $P_{MPP}$ (Wp)	330	335	340	345	350	355
Watt Class Sorting - (W)	-0/+5	-0/+5	-0/+5	-0/+5	-0/+5	-0/+5
Nominal Power Voltage - $V_{MPP}$ (V)	38.1	38.3	38.5	38.7	38.9	39.1
Nominal Power Current - $I_{MPP}$ (A)	8.67	8.75	8.84	8.92	9.00	9.09
Open Circuit Voltage - $V_{OC}$ (V)	46.0	46.2	46.3	46.5	46.7	46.8
Short Circuit Current - $I_{SC}$ (A)	9.44	9.52	9.58	9.64	9.72	9.78
Panel Efficiency (%)	16.5	16.7	16.9	17.2	17.4	17.7

Values at standard test conditions STC (airmass AM 1.5, irradiance 1000 W/m<sup>2</sup>, cell temperature 77°F (25°C).  
At low irradiance of 200 W/m<sup>2</sup> (AM 1.5 and cell temperature 77°F (25°C)) at least 95% of the STC module efficiency will be achieved.  
\*xxx indicates the nominal power class ( $P_{MPP}$ ) at STC, and can be followed by the suffix XV for modules with a 1500 V maximum system rating.

## ELECTRICAL DATA @ NOCT

Product Code\*: RECxxxTP25 72

	244	252	257	260	264	268
Nominal Power - $P_{MPP}$ (Wp)	244	252	257	260	264	268
Nominal Power Voltage - $V_{MPP}$ (V)	34.9	35.5	35.7	35.8	36.0	36.2
Nominal Power Current - $I_{MPP}$ (A)	6.99	7.10	7.19	7.25	7.32	7.39
Open Circuit Voltage - $V_{OC}$ (V)	42.3	42.8	42.9	43.1	43.2	43.3
Short Circuit Current - $I_{SC}$ (A)	7.44	7.74	7.79	7.84	7.90	7.95

Nominal cell operating temperature NOCT (800 W/m<sup>2</sup>, AM 1.5, windspeed 1 m/s, ambient temperature 68°F (20°C).  
\*xxx indicates the nominal power class ( $P_{MPP}$ ) at STC, and can be followed by the suffix XV for modules with a 1500 V maximum system rating.

## CERTIFICATION



UL 1703, Fire classification: Type 1 (1500 V XV); Type 2 (1000 V);  
IEC 61215, IEC 61730, IEC 62804 (PID), IEC 62716 (Ammonia),  
IEC 61701 (Salt Mist level 6), ISO 11925-2 (Class E)  
ISO 9001: 2015, ISO 14001: 2004, OHSAS 18001: 2007

## WARRANTY

20 year product warranty.  
25 year linear power output warranty  
(max. degradation in performance of 0.5% p.a.)

17.7% EFFICIENCY

20 YEAR PRODUCT WARRANTY

25 YEAR LINEAR POWER OUTPUT WARRANTY

## TEMPERATURE RATINGS

Nominal Operating Cell Temperature (NOCT)	44.6°C (±2°C)
Temperature Coefficient of $P_{MPP}$	-0.36 %/°C
Temperature Coefficient of $V_{OC}$	-0.30 %/°C
Temperature Coefficient of $I_{SC}$	0.066 %/°C

## GENERAL DATA

Cell type:	6 strings of 24 REC HC multicrystalline PERC
Glass:	0.13" (3.2 mm) solar glass with anti-reflection surface treatment
Back Sheet:	Highly resistant polyester
Frame:	Anodized aluminum (silver)
Support bars:	Anodized aluminum (bonded to backsheet)
Junction Box:	IP67 rated with 3 bypass diodes 12 AWG (4 mm <sup>2</sup> ) PV wire, 47" + 47" (1.2m + 1.2m)
Connectors:	Tonglin TL-Cable01S-F (4 mm <sup>2</sup> )
Origins:	Silicon: Made in USA & Norway Wafer/Cell/Module: Made in Singapore

## MAXIMUM RATINGS

Operational Temperature:	-40 ... +185°F (-40 ... +85°C)
Maximum System Voltage:	1000 V / 1500 V
Design load (+): snow	75 psf (3600 Pa)*
Maximum test load (+):	112.5 psf (5400 Pa)
Design load (-): wind	33 psf (1600 Pa)*
Maximum test load (-):	50 psf (2400 Pa)

\* Safety factor 1.5, refer to installation instructions

Max Series Fuse Rating:	20 A
Max Reverse Current:	20 A

## MECHANICAL DATA

Dimensions:	78.9" x 39.4" x 1.2" (2005 x 1001 x 30 mm)
Area:	21.6 ft <sup>2</sup> (2.01 m <sup>2</sup> )
Weight:	48.5 lbs (22 kg)

**Note!** Specifications subject to change without notice.



www.recgroup.com