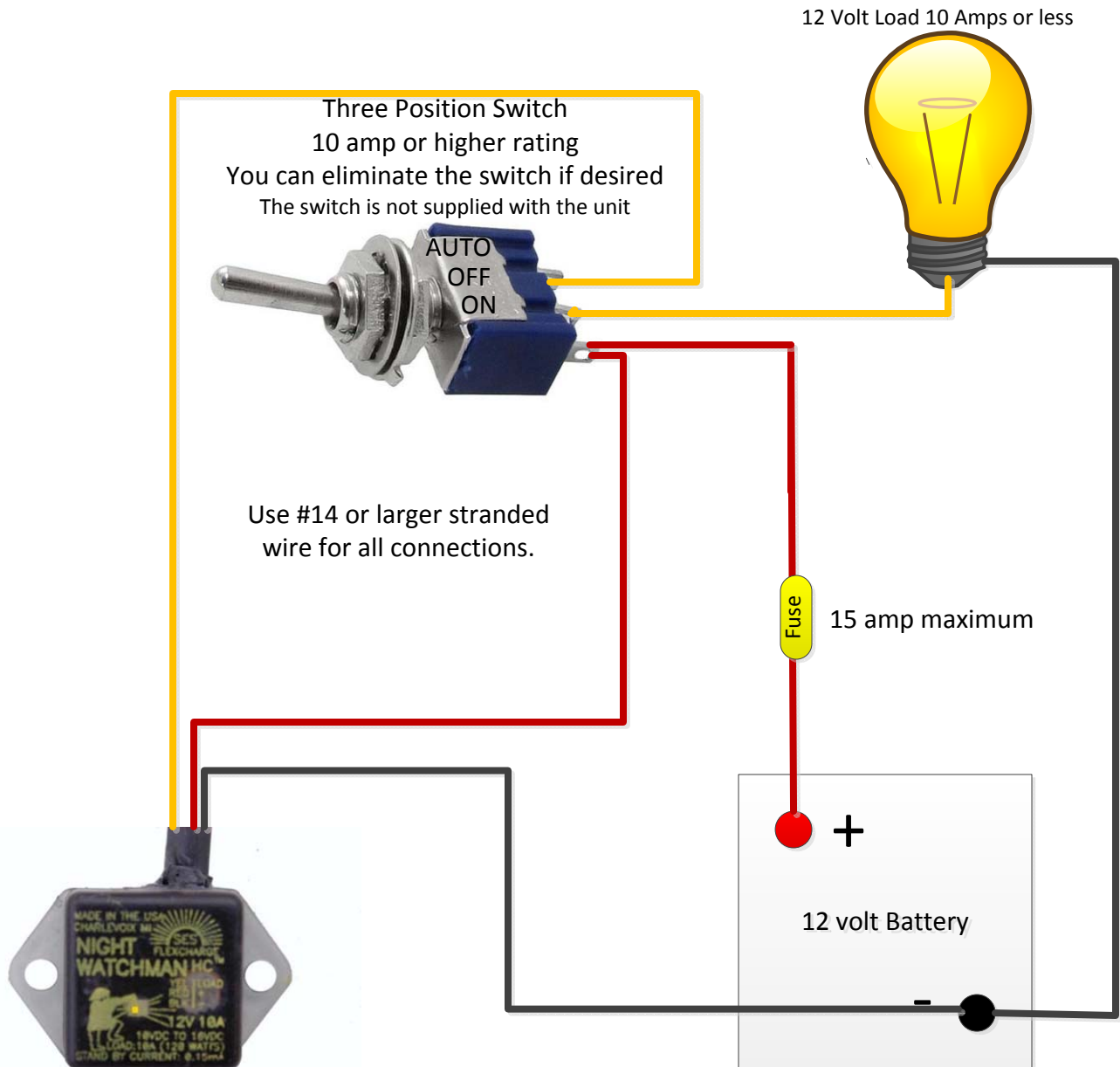


# *Flexcharge* Night Watchman Installation Instructions for Manual and Automatic operation



\*Mount in a location where lights will not interfere with the sensor. Interfering lights will prevent the unit from turning on. Do not mount where the light being turned on will shine on the Night Watchman.

\*The Night Watchman sensitivity can be adjusted by choosing its mounting location. A shaded area will cause an earlier turn on and later turn off time. A sunny area will cause a later turn on and earlier turn off time.

\*You can use the Night Watchman without the switch if desired. Connect the **RED** wire to 12 volts positive, the **BLACK** wire to 12 volts negative, and the **YELLOW** wire to the load positive. Load negative connects to battery negative.

\***Always solder and seal all wire to wire connections.**

A product of  
SES Flexcharge USA  
1217 State St  
Charlevoix, MI 49720 USA  
231-547-9430