

IronRidge Ground Arrays are the strongest system available, and have been professionally engineered from top to bottom. They go up faster than any other, which saves time and money.

Key Features

Save Cost With Easily Sourced Schedule 40 Or 80 Steel Pipe

Accommodates Either 2" or 3" Implementations

Supports Ballasted Or Embedded Foundation Applications

Key Attachment Components Are Cast Steel Providing Extra Strength

Multiple Panel Configurations For Optimizing Specific Site Conditions

No Drilling Or Welding Required During Installation Process

Backed By Industry Leading Warranty 10 yr. Limited Product, 3 yr. Finish

PE Certified For Most States

Best Customer Service And Support

IronRidge Ground Arrays are a cost-effective and scalable mounting solution that support a wide range of site and terrain challenges. The versatile IronRidge Rail system combines with installer-supplied steel pipe to form a durable and cost-effective mounting structure.

Top Cap

- The heavy duty cast steel top caps secure quickly and easily to the schedule 40 pipe with 3 set screws
- Available to fit 2" and 3" pipe
- Cast steel ASTM A216



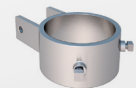
Rail Connector

- Intuitive construction
- Connects to IronRidge Standard Rail system
- Fits installer-supplied 2" and 3" pipe
- Modular panel design to decrease installation time



Optional Diagonal Brace Kit

For installations that require extra support, the diagonal brace kit includes the brace, sleeves and hardware for installation between north and south pair of support legs.



IronRidge Standard Rails integrate seamlessly with our Ground Array components

Max E-W Span Chart - 3" Ground Array

Wind	Snow psf	Tilt Angle: 0°	5°	10°	15°	20°	25°	30°	35°	40°	45°
90 mph	0	16.6'	17.0	14.5	14.0	13.2	12.6	12.1	12.0	12.0	12.1
	10	15.3	15.5	14.0	13.7	13.1	12.6	12.1	12.0	12.0	12.1
	20	13.3	13.5	12.4	12.2	11.8	11.5	11.1	11.1	11.1	11.1
	30	12.5	12.7	11.8	11.6	11.2	11.0	10.7	10.6	10.7	10.7
110 mph	0	14.7	15.2	12.8	12.4	11.7	11.1	10.6	10.5	10.6	10.6
	10	14.2	14.4	12.8	12.4	11.7	11.1	10.6	10.5	10.6	10.6
	20	12.5	12.7	11.6	11.3	10.9	10.6	10.2	10.2	10.2	10.2
	30	11.9	12.0	11.0	10.8	10.5	10.2	9.9	9.8	9.8	9.9
							With diagonal bracing		Special requirement for rails: contact IronRidge		

Max E-W Span Chart - 2" Ground Array

Wind	Snow psf	Tilt Angle: 0°	5°	10°	15°	20°	25°	30°	35°	40°	45°
90 mph	0	9.5'	9.7	8.3	8.0	7.6	7.2	6.9	6.8	6.9	6.9
	10	8.7	8.9	8.0	7.8	7.5	7.2	6.9	6.8	6.9	6.9
	20	7.6	7.7	7.1	7.0	6.7	6.5	6.4	6.3	6.3	6.4
	30	7.2	7.2	6.7	6.6	6.4	6.3	6.1	6.1	6.1	6.1
110 mph	0	8.4	8.7	7.3	7.1	6.7	6.4	6.1	6.0	6.0	6.1
	10	8.1	8.2	7.3	7.1	6.7	6.4	6.1	6.0	6.0	6.1
	20	7.2	7.3	6.6	6.5	6.2	6.0	5.8	5.8	5.8	5.8
	30	6.8	6.9	6.3	6.2	6.0	5.8	5.6	5.6	5.6	5.6
							With diagonal bracing		Special requirement for rails: contact IronRidge		

Dead Load (weight) = 3 psf; N-S Pier Spacing = 7 feet 6 inches
 Cross pipe splices not permitted in end spans or middle 1/3 of interior spans
 Topographic (wind) factor = 1.0 (no topographic effects)
 Exposure Category B (exposure category C spans will be longer)

* For more information visit www.ironridge.com to download certification letters, installation guides, and to use our ground array configuration software.

Why IronRidge



Experience - Designing/manufacturing solar mounting products since 1996

Single Source - Roof mounts, ballasted mounts, large arrays, and more; *a solution for your specific application*

Customer Satisfaction - Customer service and technical support to help you succeed

On-line Resources Available:

- Video Tutorials
- Product Configurators
- Product Certifications
- Installation Guides
- Data Sheets
- Reseller Locator



Sales: 800-227-9523
sales@ironridge.com

www.IronRidge.com
 1435 Baechtel Road
 Willits, CA 95490