



DPW | SOLAR



PREFORMED LINE PRODUCTS

Ballasted Roof Mounts

Non-Penetrating Flat Roof
Mounting System For Residential
& Commercial Applications



COMMUNICATIONS



ENERGY



SPECIAL INDUSTRIES



SOLAR

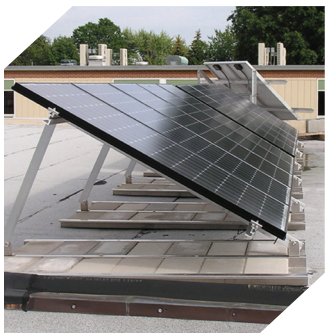
POWER-FAB®

Quality Hardware for the PV Industry





Underside of ballasted roof mount



POWER-FAB® Ballasted Roof Mount (BRM) PV Mounting System

The POWER-FAB BRM is designed to install quickly and provide a non-penetrating mounting structure for PV modules on a flat roof. The module-specific design reduces the number of components and provides for an easy assembly. The BRM utilizes high strength aluminum components and corrosion resistant hardware for long term reliability. Seasonal adjustability for maximizing production is provided by several tilt-angle settings ranging from 20° - 45°.

Maximum Strength – Durable Design

- Standard mounts designed to withstand up to 90 MPH wind zones (assumes minimum cap block requirements of 4" x 8" x 16" - 25lbs each)
- 6000 series structural Aluminum mounting rails
- Stainless steel top-clamping module mounting hardware
- Zinc plated rack assembly hardware
- High strength telescoping or one-piece tilt legs

Application Flexibility

- Several sizes available from 3 through 6 modules
- 20° - 45° tilt angle settings (full range)
- Mount up to 1500W on one rack
- Modular design allows layout flexibility

Ease of Assembly – Reduced Labor Costs

- Module Specific design reduces number of parts and labor
- Pre-applied EPDM pads on ballast pans
- Factory cut module rails and mid-clamps create uniform spacing
- Easy access top-clamping module attachment
- Single tool assembly
- Compatible with Wiley Electronic's WEEB for integral grounding

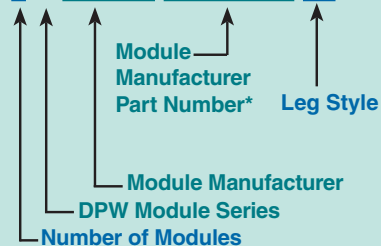
Key Benefits

- Maximum Strength
- Module Specific Design
- Ease of Assembly – Reduced Parts
- Non-penetrating
- Seasonal Elevation Adjustment
- Full scale wind tunnel qualifications



Ordering Guideline

BRM4-D-SHARP-NE170UC1-TL



*Important: Include complete module part # as listed on module manufacturer's specification sheet

Options / Upgrades

- Anodized or Powder Coated Finish on aluminum components
- Stainless Steel Rack Assembly Hardware Package
- Tamper-Resistant Module Mounting Hardware Package



Direct Power & Water Corporation
4000-B Vassar Drive NE
Albuquerque, New Mexico 87107
USA

Telephone: 800.260.3792
Fax: 505.889.3548
Web Site: www.DPWSolar.com
E-mail: info@power-fab.com

© 2011 Preformed Line Products
Printed in U.S.A.
SL-SS-1094
08.11.1M