

# Advanced diagnostics for solar and battery systems

## Conext™ ComBox

Schneider Electric brings a powerful analytic solution to monitor residential and off-grid solar installation performance, making life simpler for installers and system owners.

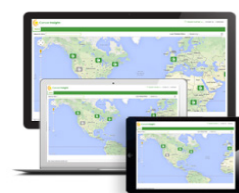


## Solution at a glance

Conext ComBox is a true System Manager for your battery based solar installation allowing you to visualize, monitor and control.

- **Cost effective:** monitor solar system performance to ensure optimal returns and uptime.
- **Flexible:** multiple visualization options for trends and analysis as well as custom data logging for diagnostics.
- **Connected:** have your system performance data at your fingertips through emails alerts and portal access.
- **Scalable:** for large multi-cluster systems, the Conext ComBox can be setup in a master-slave configuration to monitor multiple separate Xanbus networks and supported Modbus devices, such as power meters.
- **Simple and powerful:** change or configure the settings of Conext Xanbus devices through the user-interface. Modbus interface on ComBox allows you to link Conext devices with third-party systems for further diagnostic and control.

Conext ComBox easily connects with **Conext Insight** to enable you to remotely monitor a portfolio of sites from any web-connected device.



Conext Insight



Conext ComBox  
Tablet App

Homeowners can reap maximum benefits from their battery based solar installation by keeping realtime track of system performance using the **Android Tablet App**.

Conext ComBox can be coupled with **Conext RL** grid-tie inverters to enable zero export in regions where homeowners have no incentives to sell PV energy to the grid.

# Technical Specifications

## Conext ComBox

Device short name	Conext ComBox
<a href="#">Electrical specifications</a>	
<a href="#">Communication interfaces</a>	
Xanbus	Connector: 2 x RJ45 Products Supported: Conext™ XW+, SW, MPPT 60-150, MPPT 80-600, AGS, SCR, Battery monitor
Ethernet	Connector: 1 x RJ45, 10 / 100 MBPS Server: FTP, Web, Modbus TCP/IP slave, SMTP, SNTP, Auto discovery: DPWS
RS485	Modbus (1 x Connector: Screw 5-terminal, 16-24AWG, 2-wire serial, 19200 bps)
<a href="#">Data Interfaces</a>	
USB 2.0-Host	Connector: USB-A, Protocols: MSD (firmware upgrades and device locator)
USB 2.0-Device	Connector: USB-mini B, Protocols: MSD (data extraction)
<a href="#">Power supply options</a>	
DC input	Certified / Listed / CE, using a 6.5 mm power plug, 9 - 24 Vdc (universal multi-pin AC adapter included)
Power consumption	<2 W typical / 10 W peak
Xanbus	When connected to Conext™ XW+ or MPPT 80 600
RS485 connector	24 Vdc input(safety extra low-voltage only)
<a href="#">Memory</a>	
Internal	96 MB flash
External	Micro-SD Card (2GB or more, class 2 or better recommended)
<a href="#">Conext ComBox Android tablet application*</a>	
Software	Minimum Android version 4.0 (Ice Cream Sandwich), download via Google Play
Hardware	Minimum tablet screen size (7", 1024 x 600, e.g. Acer Iconia Tab A100, Acer Iconia Tab A500, Google Nexus™ 7, Asus Transformer TF700T, Samsung Galaxy Tab*2 10.1)
<a href="#">General specifications</a>	
Weight	0.25 kg (0.55 lb)
Dimensions (H x W x D)	11.4 x 16.9 x 5.4 cm (4.5 x 6.7 x 2.1 in)
Housing/mounting system	ABS Plastic / DIN-rail: 35 mm, Wall-mount: 2-screw
IP rating/mounting Location	IP 20, NEMA 1, Indoor only
Status display	5 x LEDs
Temperature	Operating: -4 to 122 °F (-20 to 50 °C) / storage: -40 to 185 °F (-40 to 85 °C)
Humidity	Operating: < 95%, non-condensing / storage: < 95%
Part number	865-1058
<a href="#">Features</a>	
Programmable dry contact relay	Screw 3-terminal, 16-24 AWG, NC-Com-NO, Form: Class 2, 24 Vdc 4 A max
Graphical user interface	Internet Browser, Android tablet app
Remote firmware upgrades	Yes (ComBox and connected Xanbus devices)
Custom datalogger	Yes (requires Micro-SD card)
Warranty	5 years
Number of Xanbus devices	Up to 20 (depending on device type)
<a href="#">Regulatory approvals</a>	
Marking	CE, RCM
EMC immunity	EN61000-6-1 residential / commercial
EMC emission	EN61000-6-3, FCC Part 15 Class B, Ind. Canada ICES-003 Class B
Substances/environmental	RoHS

Specifications are subject to change without notice. \*Tablet not included

### Conext ComBox communication device works with the following Schneider Electric products



#### Conext XW inverter/charger

XW 5548 NA Product no. 865-5548-01  
XW 6848 NA Product no. 865-6848-01  
XW 7048 E Product no. 865-7048-61  
XW 8548 E Product no. 865-8548-61



#### Conext SW inverter/charger

SW 2524 120 Product no. 865-2024  
SW 4024 120 Product no. 865-3524  
SW 2524 230 Product no. 865-2524-61  
SW 4024 230 Product no. 865-4024-61



#### Conext MPPT 60 150 solar charge controller

Product no. 865-1030-1



#### Conext MPPT 80 600 solar charge controller

Product no. 865-1032



#### System Control Panel (SCP)

Product no. 865-1050-01



#### Automatic Generator Start (AGS)

Product no. 865-1060-01



#### Conext Battery Monitor

Product no. 865-1080-01



#### Conext RL 3000/4000/5000 E/ E-S

3000 Product no. PVSNVC3000/3000S  
4000 Product no. PVSNVC4000/4000S  
5000 Product no. PVSNVC5000/5000S



#### Conext Insight