



"Advanced PV Module Mounting Systems"

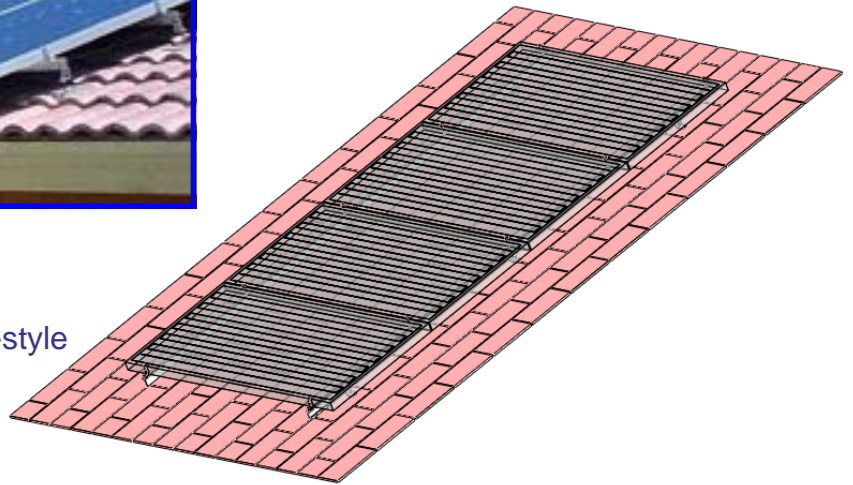
Genesis PRO Series Flush Mounting Systems



Genesis PRO Series

"For the Professional Installer"

A new breakthrough product in the PV industry, developed and tested by Two Seas Metalworks.



This brochure includes:

- New product drawings and pictures!
- Updated info about attaching to Spanish-style roofs and stand-offs!
- Updated pricing info!
- Updated matrix for new PV modules!

All Genesis PRO Series Flush Mounts are rated at 125 mph wind-loading (50 lbs/ft²)!

Genesis PRO Series is the best solution for Flush Mounted PV Arrays

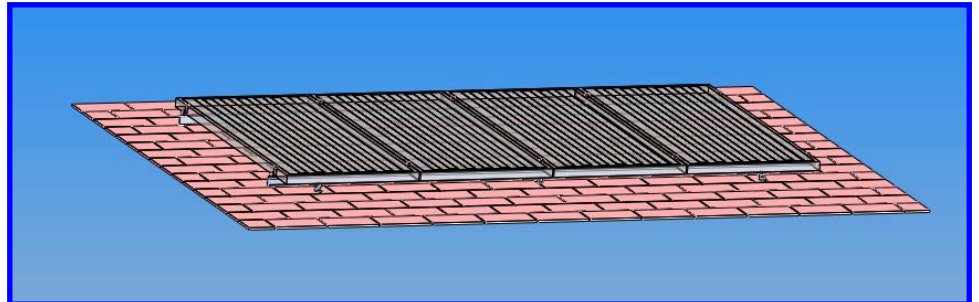
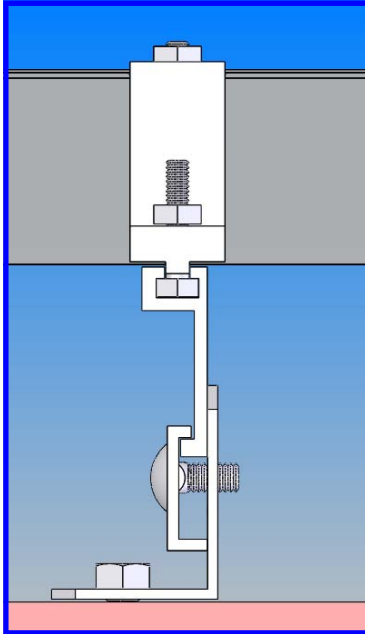
- Quick and easy top-down installation for installing plug-and-play modules allows the entire assembly to take place on the roof.
- Installation can occur on any type of roof; including composition shingles, tile or standing seam and can be used with standard roof flashing if desired.
- Our flush mount system may be mounted in any direction.
- All Two Seas products carry our *Industry Leading 20-year Warranty*.
- Fully engineered and tested, our **Genesis PRO Series** (GPS) meets and exceeds; UBC standards for wind loads and building code requirements.
- This system will accommodate any and all standard modules from every major solar manufacturer in the industry.
- Due to roof orientation or limited space, the PV modules may be mounted vertically or horizontally.

Call 800.227.9523

Two Seas Metalworks
291 Shell Lane
Willits, CA 95490

800.227.9523
fax 707.459.1833
www.2seas.com

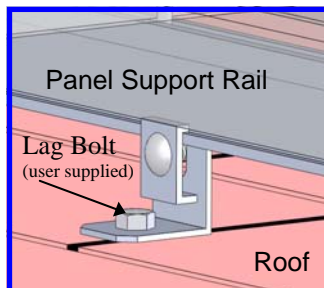
Innovative Channel Design Provides Strength and Mobility



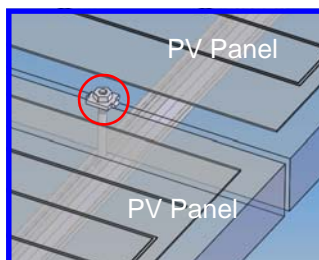
Genesis PRO Series (GPS) Flush Mounts are designed so that professional installers and even the not-so handy man can install a PV system quickly, safely and efficiently. Completely engineered and tested so as not to compromise quality, these mounts will resist the harshest weather conditions. Call (800) 227-9523 or email us at feedback@2seas.com for more information.

All GPS Mounts are available in Marine-grade anodized finish!

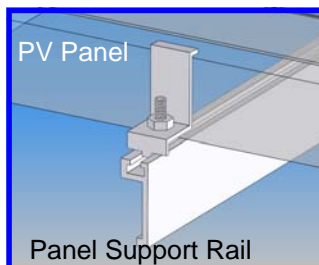
GPS Components Provide Strength and Added Degrees of Freedom



Our press-fit **GPS Foot Clamp Assembly** provides a sturdy attachment point to any roof with the freedom of adjustability along the rails. This clamp style attachment is 20x stronger than similar sliding bolt styles! The installer is given the option of mounting the feet on the inside of the Panel Support Rails or the outside. The GPS Feet can be lagged to a roof, attached to a Sliding Foot Assembly for Spanish style roofs, or attached to Standoffs for pitched roofs. (See next page)

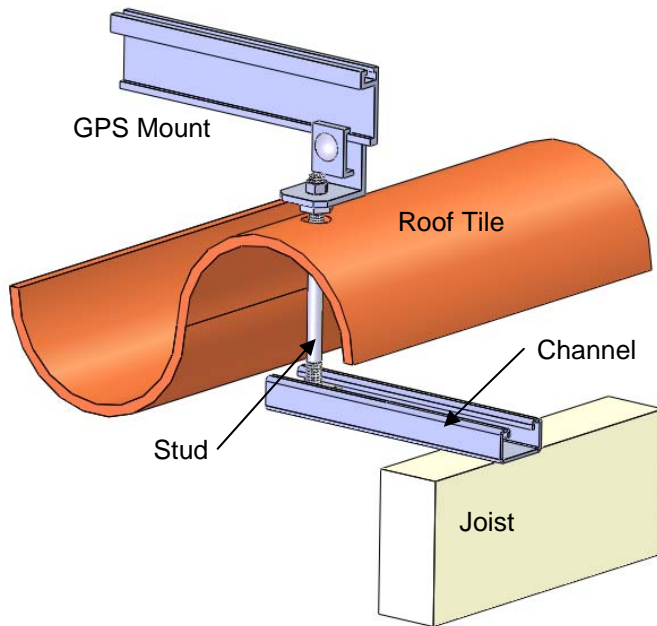


The **GPS Spacer** adds overall stability yet requires only $1/4$ inch in between panels as opposed to 1 inch required by other mount manufacturers! It too can be positioned anywhere along the GPS Panel Support Rails by sliding the bolt head along the channel. The Spacer clamps the panels into place so as not to load the module glass.

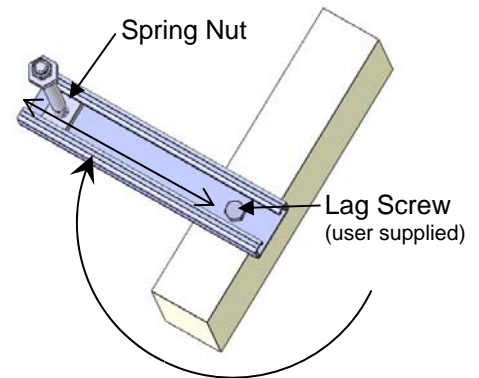


The **GPS End Clamp** completes the easy top-down installation while on the roof. Our GPS design alleviates the need to hoist the mount to the roof and provides the versatility to fasten modules of any length. This component is precisely fabricated to fit any PV module on the market. (Please specify what panels are being used on every GPS order.)

Sliding Foot Assembly Mounts Under Spanish Style Roofs



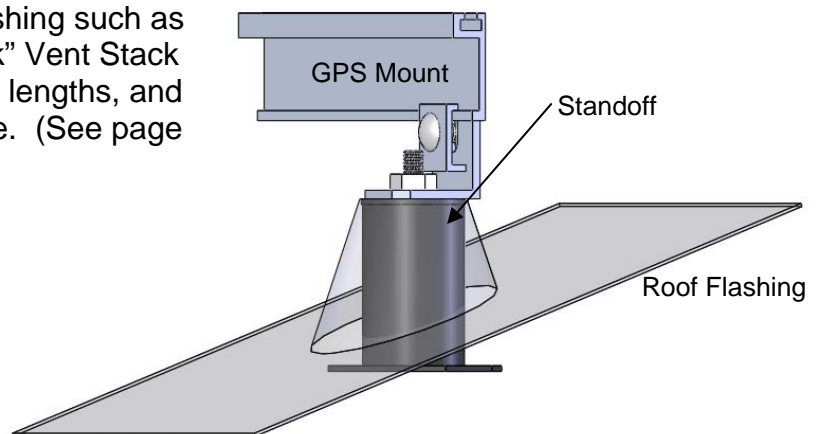
The optional Sliding Foot Assembly (SFA) attaches to the foot of any GPS model and fastens under Spanish style roofs as shown. The installer is allowed to attach the SFA to any joist and rotate 360 degrees about the lag screw until the desired position is reached. The Spring Nut slides along the channel and locks into any position so that the stud will line up with the roof tile at the desired location. From here, the GPS Mount is attached to the stud without any interference. One SFA is required per GPS Foot. See page 4 for pricing.



The SFA allows the stud location to be in an area anywhere within 44 square inches!

Stand-offs Add Tilt to a GPS System on a Pitched Roof

Our Stand-offs work with any standard flashing such as the Oatey #11841* or equivalent "No caulk" Vent Stack Flashing. Stand-offs come in 3 and 6 inch lengths, and are powder coated for corrosion resistance. (See page 4 for pricing information.)



If your installation would benefit from:

- Quick and easy installation
- Fully engineered and tested products
- The ability to mount any solar panel
- An industry leading 20-year warranty!

Call Two Seas Metalworks today at 800.227.9523!



Genesis PRO Series

"For the Professional Installer"

Call 800.227.9523

Model Matrix and Price List



Model	Retail Price (\$)	Qty. GPS Feet	Est. Wt. (lbs.)	ASE		AstroPower		BP Solar			Evergreen		Kyocera Solar		Matrix (Photowatt)		Sharp Solar		Shell Solar (Siemens)		Sunwize	Uni-Solar																		
				300	65 75	100 110 120	1165 x140	AP	SX	MSX	EC	KC	PW	(W)	SM	SO/SP	SW	US																						
GPS-048	110.00	4	6	-	2	-	1	1	275 to 585 75TU	50	110	120	3125	5170	47	94	60	120	158G	750	1250	1650	80	123	167	185	46	50	50H	55	110	80	160	64						
GPS-060	125.00	4	7	-	2	-	-	-	2	-	-	-	-	-	2	2	2	2	-	-	-	-	-	-	-	-	4	2	-	-	-	-	-	2						
GPS-072	140.00	4	9	-	3	-	2	-	3	2	-	-	-	-	-	-	-	-	-	3	2	-	-	-	-	-	5	-	3	2	-	-	3	-	2					
GPS-084	155.00	4	10	-	3	-	2	-	4	-	3	-	-	-	3	3	3	2	-	-	-	-	-	-	-	-	6	3	-	-	-	-	-	-	3	-				
GPS-096	170.00	4	11	-	4	-	-	-	4	-	-	-	-	-	4	4	-	-	-	4	-	2	-	-	-	-	7	-	4	-	-	-	-	-	4	-				
GPS-108	210.00	6	12	2	-	-	3	-	-	5	-	-	-	-	4	4	-	-	-	3	8	4	-	-	-	-	8	4	-	-	-	-	-	-	4	-				
GPS-120*	225.00	6	14	-	5	4	-	3	5	-	-	4	-	-	-	-	4	-	-	5	-	-	-	-	-	-	-	-	5	-	-	-	-	-	-	5	-			
GPS-132*	245.00	6	16	-	-	-	-	-	6	4	-	3	5	5	-	5	5	-	3	4	3	-	4	3	-	-	9	-	-	4	-	-	-	-	-	4	-			
GPS-144*	260.00	6	18	-	6	5	4	-	6	7	-	5	-	-	-	5	5	-	5	6	-	6	-	6	-	-	10	5	6	-	-	-	-	-	-	6	-			
GPS-156*	275.00	8	20	-	7	-	-	4	-	-	5	-	-	-	-	-	-	-	-	-	-	-	-	-	-	-	-	-	7	-	-	-	-	-	-	-	6	-		
GPS-168*	290.00	8	21	3	-	6	-	-	7	8	-	6	5	4	6	6	6	4	6	7	5	-	7	5	-	6	4	5	12	6	-	-	-	-	-	-	7	-		
GPS-180*	305.00	8	23	-	8	-	5	-	8	-	-	-	-	-	-	-	-	-	-	-	-	4	-	4	-	-	-	-	8	-	-	-	-	-	-	-	-	8	-	
GPS-192*	320.00	8	25	-	9	7	-	-	9	6	7	6	-	-	7	7	7	-	7	8	-	8	-	8	-	-	-	14	7	-	-	-	-	-	-	-	9	6		
GPS-204*	340.00	10	28	-	-	-	-	5	9	10	-	-	-	-	5	-	-	-	5	9	6	-	9	6	-	-	-	15	-	9	-	-	-	-	-	-	-	-	-	
GPS-336*	580.00	16	45	6	15	12	9	8	15	16	11	12	10	8	12	12	12	8	15	10	7	15	12	8	10	12	24	12	15	10	10	10	10	10	10	10	10	10	10	10

Additional Kits		Part No.	Description	Retail Price (\$)
		ST-3	1 ea. 3" stand-off and fasteners	18.00
		ST-6	1 ea. 6" stand-off and fasteners	19.00
		GPS-Splice Kit	2 ea. Rail Splices and fasteners	12.00
		SFA**	1 ea. Sliding Foot Assembly	16.00

- Important:** You must specify the solar panel manufacturer, model, and quantity to insure correct components are included with each kit.
- GPS model numbers are based on overall GPS Rail length. (i.e. GPS-084 consists of (2) 84" GPS Rails)
- *Kits have spliced rails for overall length.
- Hardware or fasteners provided as required for the installation of the mount.
- Rail lengths longer than 96 inches are supplied with two pieces that are spliced together at the installation site. Single piece rails are available by special order and are shipped by common carrier.
- All kits contain fully engineered and tested components. All items manufactured under the complete control of our Quality Assurance Guidelines by our in-house professionals.

Two Seas Metalworks, the "Original" Universal Mounting Systems Manufacturer!

** Order as a complete mount (i.e. GPS-XXX-SFA) and add \$16 per GPS Foot.