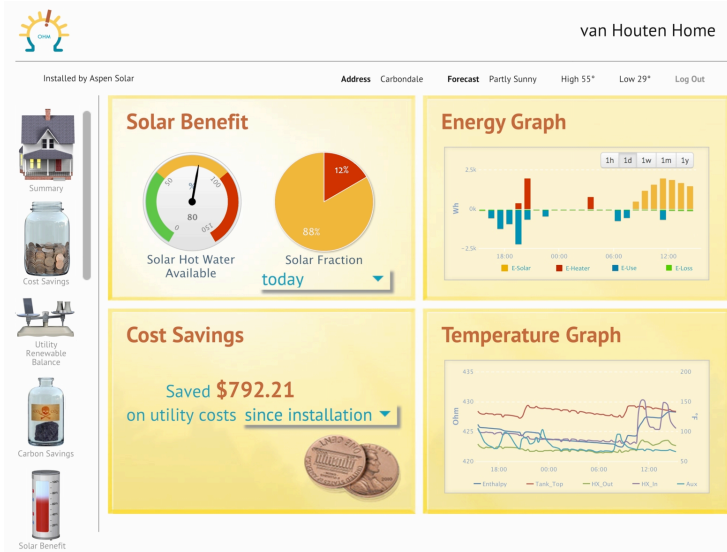




# Ohm Solar Thermal Energy Monitoring System

The Ohm is a new and unique residential solar thermal monitoring system. It not only tracks your solar system's performance, it also meters all thermal energy produced and consumed.

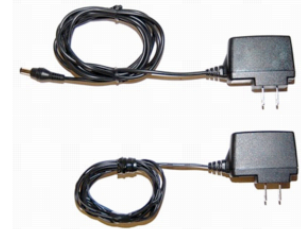
With the unique Ohm sensor, installation couldn't be easier - even for retrofits. Via a zero-configuration wireless connection, the Ohm posts data to a web-based dashboard, where you can view data in real-time.



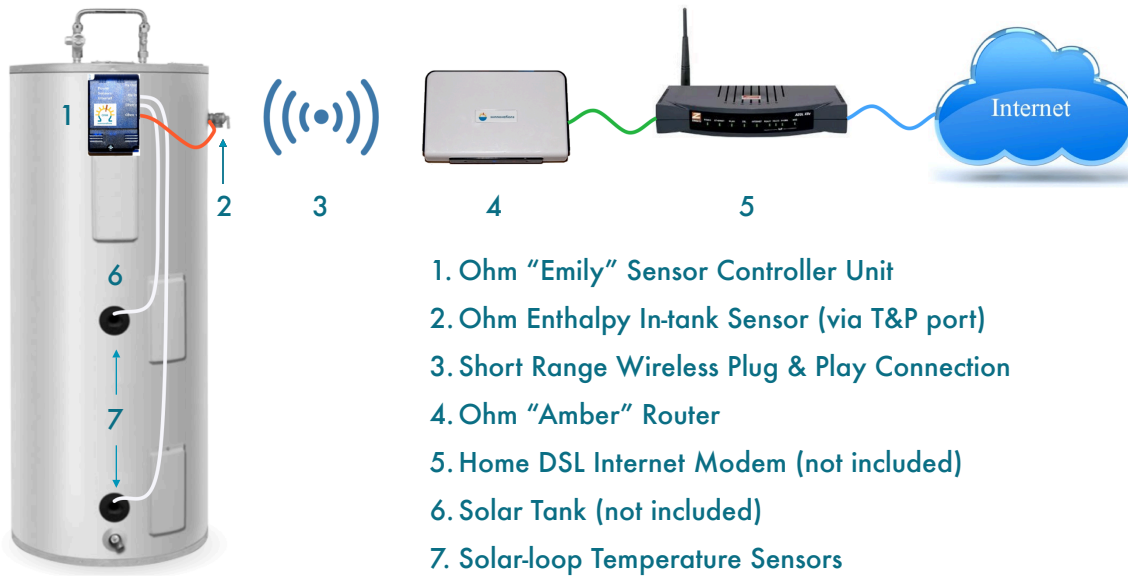
## Key Features

- ★ Proprietary\* Ohm sensor measures thermal energy in tank without a flow meter
- ★ The Ohm sensor threads into the T&P tank port for quick, solder-free installation
- ★ Measured energy values include:
  - Solar heating
  - Auxiliary heating
  - Hot water use
  - Available solar-heated water
  - Tank losses
- ★ Three digital temperature sensors
- ★ Web based and smart device compatible dashboard
- ★ 100% plug and play wireless configuration - zero setup required

\* Patent Pending



## System Configuration



## Ohm Product Specifications

Ohm "Emily" Sensor Controller		Ohm "Amber" Internet Router	
Sensors	Up to 2 Ohm enthalpy sensors and up to 4 temperature sensors.	Ports	Ethernet RJ45
Ports	4 RJ11 sensor ports	Network	Connects to internet via home LAN using included 6 ft CAT5 cable.
Network	Connects via "Amber" to the Ohm web server	Radio	6Lowpan® 2.4 GHz radio, range up to 800 ft.
Radio	6Lowpan® 2.4 GHz radio, range up to 800 ft.	Dimensions	LxWxH: 7" x 4.5" x 1"
LEDs	Red: Power                      Green: Sensors Blue: Internet                  Yellow: 2nd Ohm sensor	LEDs	Red: Power    Blue: Internet    Green: Status
Power	24V AC or DC, supplied via included 2-prong 110V AC UL-certified power adapter.	Power	6V DC, supplied via included 2-prong 110V AC UL-certified power adapter.
		Memory	2 GB
Ohm Sensors		Ohm Metering	
Enthalpy Sensor	3/4" threaded male & female lead-free brass fitting, includes digital temperature sensor & 6 ft cable with RJ11 jack. Additional sensor for dual tank systems.	Energy Metering	Solar Thermal Energy, Load/Usage Energy, Auxiliary Energy (backup heater), Tank loss All metered in Wh; Accuracy: <2.5%.
Temperature Sensor	2 digital temperature sensors with RJ11 jack and 6 ft cable; Operating Range: 0-100°C, 0.3°C accuracy.	Temperature Metering	Solar in; solar out; top tank temperature (integrated with enthalpy sensor). Optional 4th temperature sensor or 2nd Ohm enthalpy tank sensor.



**SUNNOVATIONS**  
a revolution in solar hot water

**Sunnovations Inc.**

1616 Anderson Road

McLean, VA 22102

+1-703.286.0923

ohmsupport@sunnovations.com

www.sunnovations.com/ohm