

Polycrystalline Photovoltaic Module



DESIGNED FOR OFF-GRID APPLICATIONS

altE solar modules are designed specifically for use in off grid applications. Manufactured in accordance to ISO9001 standards and certified by IEC61215 and CSA/US to assure electrical safety compliance.

APPLICATIONS

- Off-grid Power for Cabins and Vacation Homes
- Solar Water Pumping
- Solar Powered Refrigerators
- Remote WiFi and Wireless Repeaters
- Power for RVs and Campers
- Electrification of Remote Villages
- Hobbyist Projects Needing Remote or Mobile Power
- Power for Remote Monitoring Systems

CERTIFICATIONS



WARRANTY INFO

altE modules offer 3 year workmanship / 25 year performance warranty.

ALT50-12P

50 WATTS, 12 VOLTS



Polycrystalline Photovoltaic Module



ELECTRICAL SPECIFICATIONS

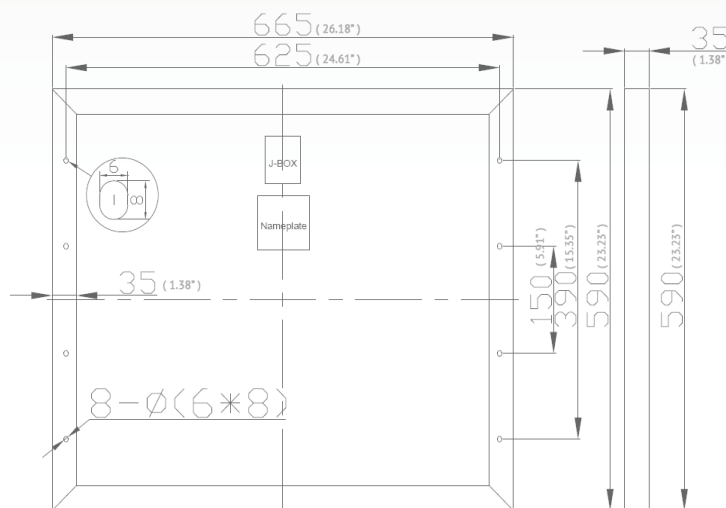
Open-Circuit Voltage (Voc)	22.3V
Optimum Operating Voltage (Vmp)	18.0V
Short-Circuit Current (Isc)	3.03A
Optimum Operating Current (Imp)	2.78A
Maximum Power at STC* (Pmax)	50Wp
Operating Temperature	-45°C to 85°C
Power Tolerance	±5%
Nominal Voltage	12V
Maximum Series Fuse Rating	6A
Maximum System Voltage	600V
Module Efficiency	12.7%

TEMPERATURE CHARACTERISTICS

Nominal Operating Cell Temperature (NOCT)	48 ± 3°C
Temperature Coefficient of Pmax	-0.43%/°C
Temperature Coefficient of Voc	-0.36%/°C
Temperature Coefficient of Isc	+0.06%/°C

MODULE CHARACTERISTICS

Module Dimensions	590 x 665 x 35mm 23.2" x 26.2" x 1.4"
Weight	4.6kg 10.1lbs



SOLAR CELLS: Polycrystalline solar cells

LAMINATE: Glass /EVA / TPT (tedlar/pet/tedlar) or TPE

FRONT SIDE: High-transmission 3.2mm tempered glass

BACK SIDE: TPT /TPE

FRAME: Clear anodized aluminum frame

OUTPUT: Junction box
(+/red terminal on right and -/black terminal on left)

CERTIFICATIONS

