

TECHNICAL BULLETIN

SUNMODULE PRODUCT CHANGES

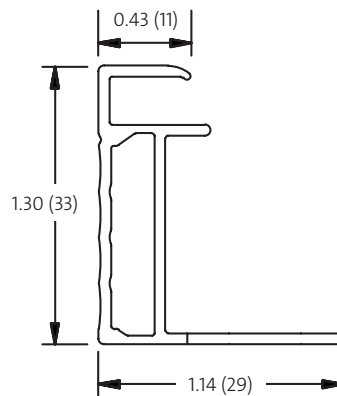
December 3, 2014 | Issue: 1033 Rev. D



SolarWorld will be introducing a new frame profile in late Q1 2015. This frame will replace the current frames used on 60-cell and 72-cell modules and has integrated new features based on customer feedback.

Frame profile

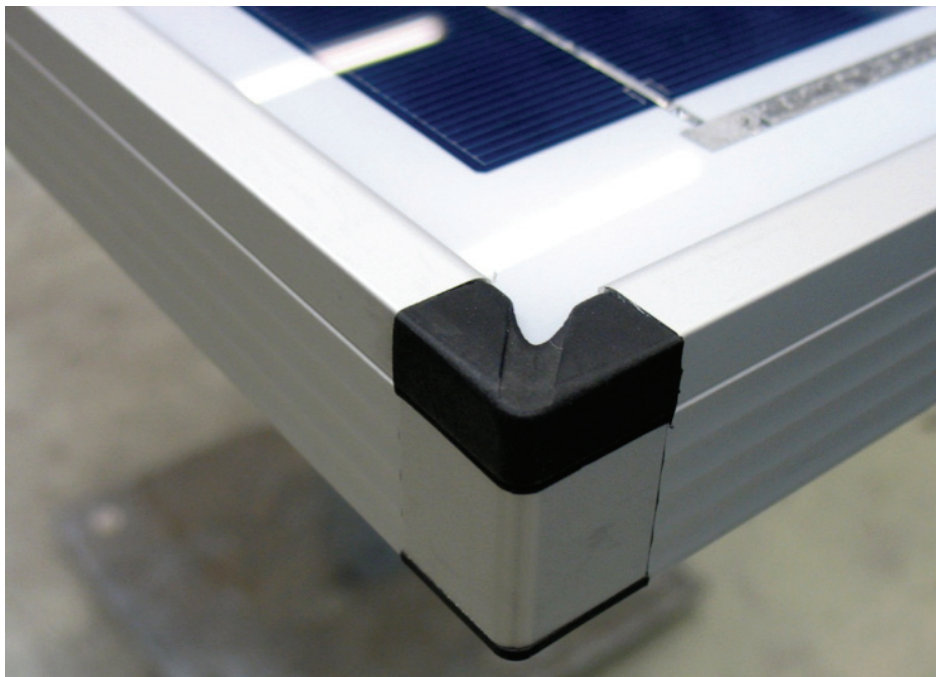
The new frame will change from a height of 31 mm to 33 mm; the 33 mm frame may be denoted as version 4.0.

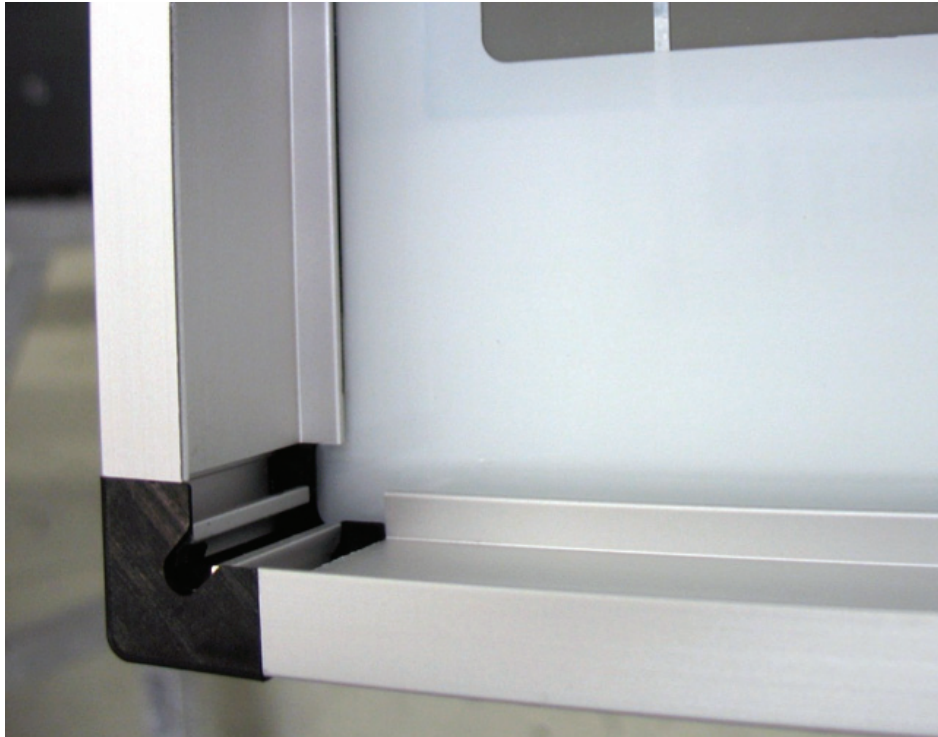


Measurements shown in Inches (mm).

Frame features

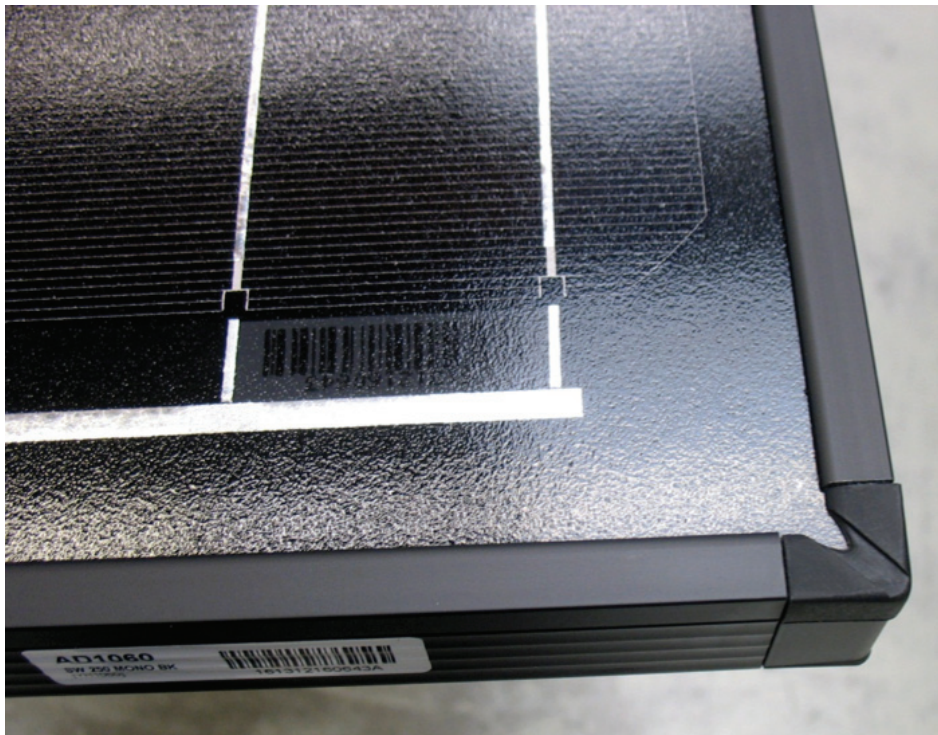
The frame features a new scalloped design which reduces the impact of scratches on the frame and integrated drainage from the front side of the module that provides for faster draining of water.





The new frame retains flanges on the long-side of the module with 4-locations for grounding lugs and 4 mounting holes. There are no flanges on the short-side.

Black modules will feature a black corner key.



60-cell Footprint and Mounting Holes

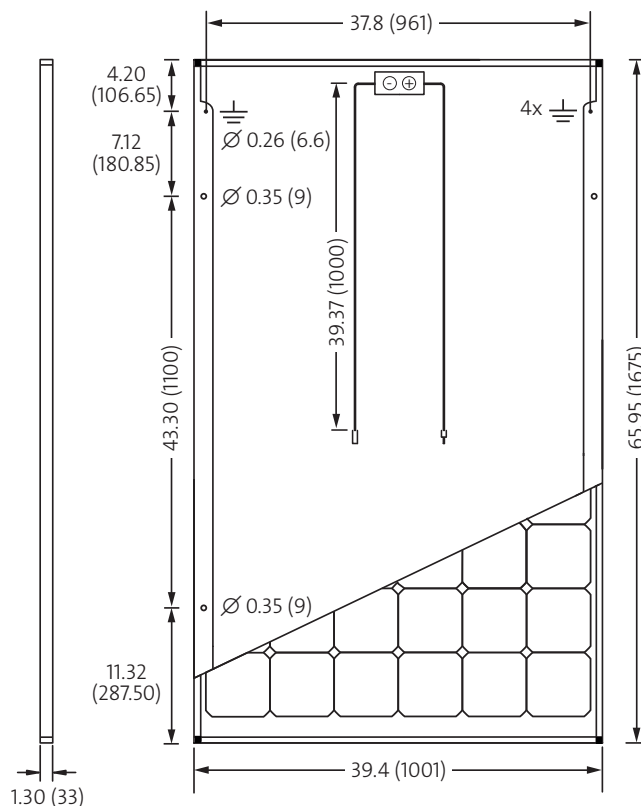
The footprint of 60-cell Sunmodules (Protect, Plus and Pro-Series) remains the same at 1675 mm x 1001 mm (65.94" x 39.41"). Mounting holes are now 961 mm (37.83") on-center, an increase from 951 mm; they are still located 288 mm (11.33") from the frame edge. Mounting holes are the same size (9 mm / 0.35"); and the grounding holes are still 6.6 mm (0.25").

Sunmodule Plus/Pro-Series Weight:

39.7 lb (18.0 kg)

Sunmodule Protect Weight:

47.4 lb (21.5 kg)

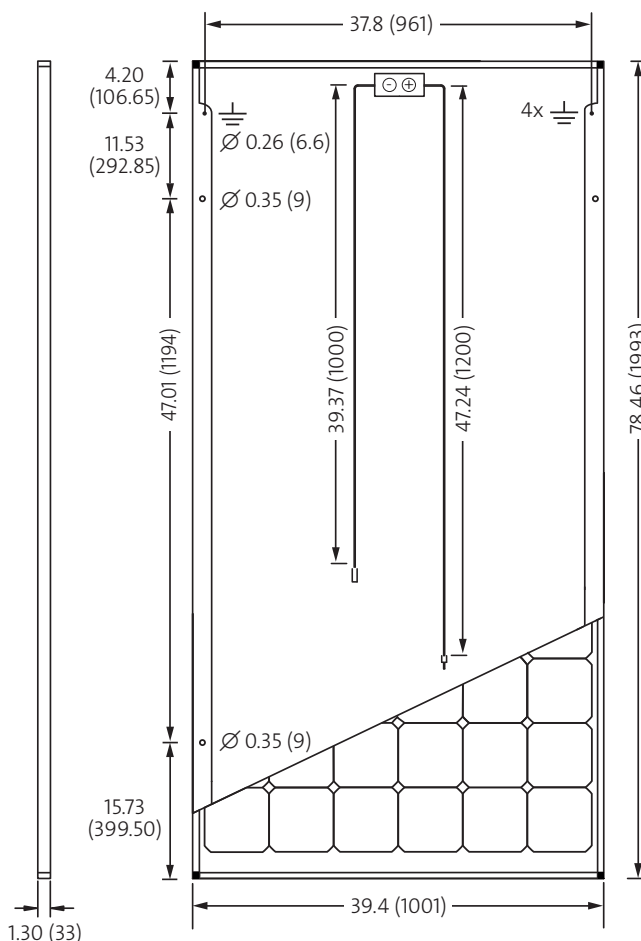


72-cell Footprint and Mounting Holes

The 72-cell module footprint will increase from 1985 mm X 990 mm (78.1" x 39") to 1993 mm X 1001 mm (78.5" x 39.41"). The mounting holes are now 961 mm (37.83") on-center, an increase from 955 mm (37.6"); they are located at 399.5 mm (15.73") from the frame edge. Mounting holes are now 9 mm (0.35") instead of the 17.5 mm x 7 mm slot; the grounding holes increase from 4 mm to 6.6 mm (0.25") and are located 106.65 mm (4.2") from the edge of the frame.

Sunmodule XL Weight:

47.6 lb (21.6 kg)



Measurements shown in Inches (mm).

Junction boxes and connectors

SolarWorld will standardize junction boxes to the B139, SB8 and SB12 on all modules. Amphenol H4 connectors will also be standard on all on-grid modules. (Please reference Technical Bulletin 1030 for additional information on the SB12 j-box).

Mounting and Load Ratings

Mounting positions remain the same with some minor variations; short-side mounting is still allowed. The maximum load rating on the 60-cell module has increased to 178 psf (8.5 kN/m²); short-side mounting load ratings have increased to 41 psf (2.0 kN/m²) from 30 psf (1.44 kN/m²).

Sunfix plus Clamps

A new clamp has been developed for the Sunfix plus system.

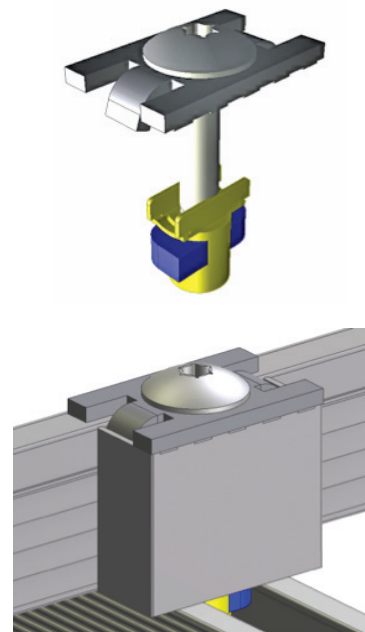
Benefits

- >> Compatible with current Sunfix plus racking
- >> Anti-twist protection keeps clamp stable while torquing down
- >> Uniform spacing of modules
- >> T40 connector – same as current Sunfix clamps
- >> Same positioning guide for easy mounting to Sunfix rail
- >> Greater clamping surface area (approximately 10% more)
- >> Available in silver and black

Clamps will be released at the same time as the modules; current clamps will be available until inventory is depleted.

Please contact your salesperson/distributor with your initial order details.

Please also inform your salesperson/distributor if you expect to have a large inventory of 31 mm frame modules well beyond March 2014.



DESCRIPTION	CURRENT ITEM	REPLACEMENT ITEM
Top Clamp Assy Silver	SA0213	SA0417
Top Clamp Assy Black	SA0214	SA0418
End Spacer Silver	SA0215	SA0415
End Spacer Black	SA0181	SA0416

Module types

Glass / back sheet modules will remain as Type 1; Protect modules will remain as Type 3.

Packaging Quantities

60-cell modules will be shipped 30 per pallet, they will continue to be shipped horizontally. 72-cell module shipping capacity will increase to 29 modules per pallet from the current 21 modules per pallet; they will continue to be shipped vertically.

All modules will be assigned new item codes for traceability.

[YAC1120]

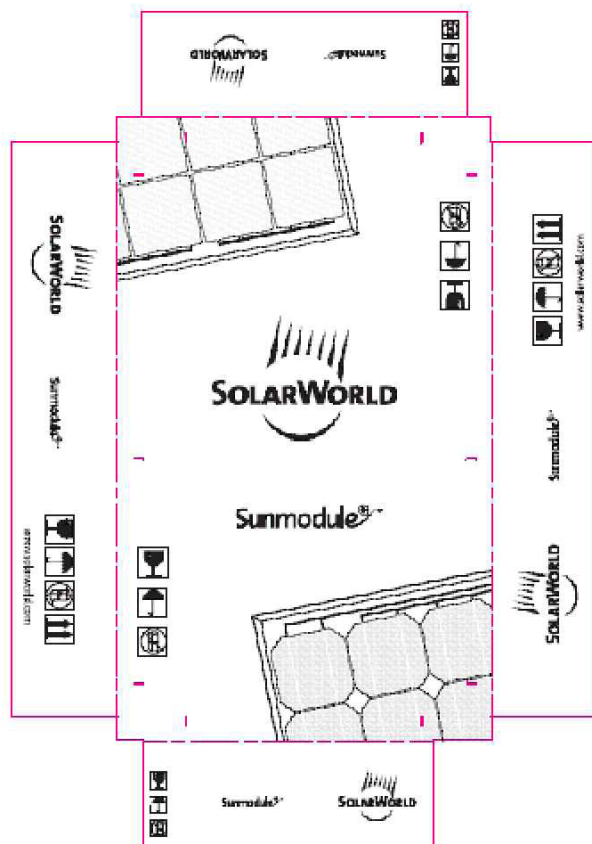


131012345671

CURRENT NUMBER	EXTERNAL NUMBER	MODULE DESCRIPTION
AD	YAD	Sunmodule Plus SW XXX Mono Black
AC	YAC	Sunmodule Plus SW XXX Mono
AL	YAL	Sunmodule Protect SW XXX Mono Black
AJ	YAJ	Sunmodule Protect SW XXX Mono
AB	YAB	Sunmodule Pro-Series SW XXX Poly
AO	YAO	Sunmodule Plus SW XXX Poly WOB
AP	YAP	Sunmodule Pro-Series SW XXX XL Mono

Note: some products shipping from our factory in Germany may ship with the old protector through March.

Old protector



New protector

