

Sweat Thermometers with Thermowells

2 inch



sweat well

Thermometer with Sweat or Threaded Connection.

- Brass thermowell is included to allow the thermometer to be removed without draining the system.
- 2 inch or 2 1/2 inch Dial.

Materials: Case: steel; Well: brass

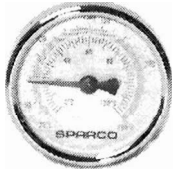
Temperature Range: 32 F to 250 F (0 C to 121 C)

Connection Size: 1/2 in.

Product Number	Connection Type	Dial Size		Length		Weight		Comments
		(inch)	(mm)	(inch)	(mm)	(lb)	(kg)	
GS200	Sweat	2 in.	51 mm	51 mm	51 mm	0.21 lb	0.095 kg	Brass thermowell is included to allow the thermometer to be removed without draining the system.
GS250	Sweat	2 1/2 in.	63.5 mm	51 mm	51 mm	0.25 lb	0.114 kg	Brass thermowell is included to allow the thermometer to be removed without draining the system.

Threaded Thermometers with Thermowells

2 1/2 inch



NPT well

Thermometer with Sweat or Threaded Connection.

- Brass thermowell is included to allow the thermometer to be removed without draining the system.
- 2 inch or 2 1/2 inch Dial.

Materials: Case: steel; Well: brass

Temperature Range: 32 F to 250 F (0 C to 121 C)

Connection Size: 1/2 in.

Product Number	Connection Type	Dial Size		Length		Weight		Comments
		(inch)	(mm)	(inch)	(mm)	(lb)	(kg)	
GT161	NPT	2 in.	51 mm	51 mm	51 mm	0.21 lb	0.095 kg	Brass thermowell is included to allow the thermometer to be removed without draining the system.
GT162	NPT	2 1/2 in.	63.5 mm	51 mm	51 mm	0.25 lb	0.114 kg	Brass thermowell is included to allow the thermometer to be removed without draining the system.