

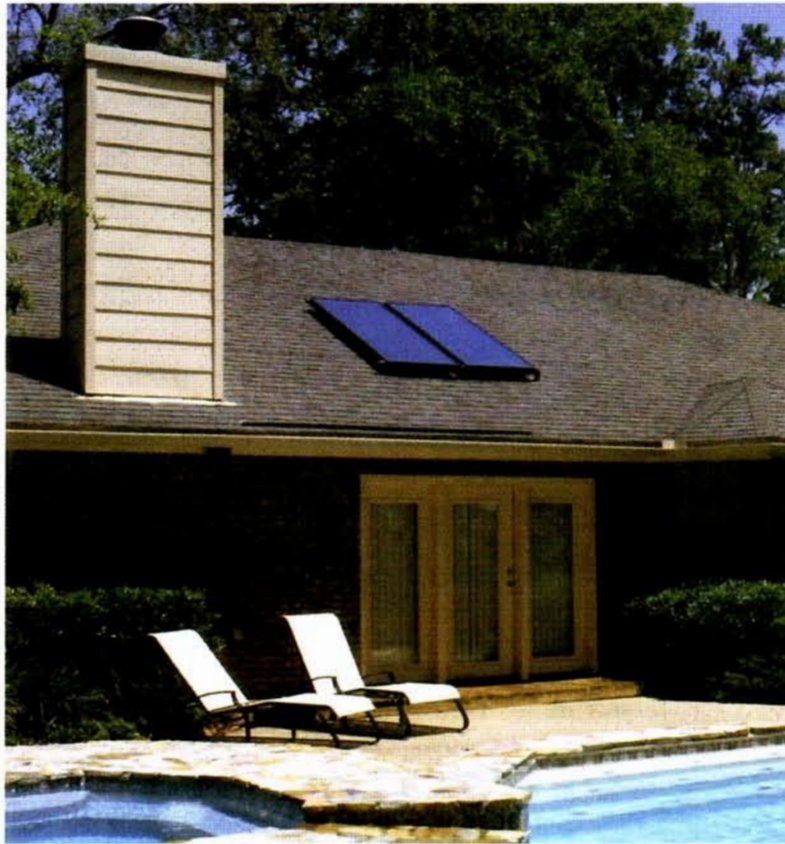


Leading the Industry with Innovative Energy Solutions.

# EAGLESUN™

RESIDENTIAL WATER HEATING SYSTEM

*The Natural Solution for Hot Water*



### **EAGLESUN Saves the Environment.**

EagleSun operates at a fraction of the cost of electric or gas water heaters, and reduces fossil fuel consumption. Solar power is clean, non-polluting, renewable, and free!

### **EAGLESUN Saves You Money.**

EagleSun harnesses the power of the sun and reduces your monthly utility costs by as much as 30%.

### **EAGLESUN Adds Value to Your Home.**

You recapture your initial investment of the EagleSun System through increased home equity & energy savings.

---

*Eagle Sun collectors feature our premium Crystal Clear selective coating in an attractive aluminum frame with a 30 year design life.*

Eagle Sun Systems  
PO Box 61326  
Jacksonville, FL 32236  
904-781-8305



800-874-2190  
Visit us on the web at  
[www.aetsolar.com](http://www.aetsolar.com)



Leading the Industry with Innovative Energy Solutions.

# EAGLESUN™

RESIDENTIAL WATER HEATING SYSTEM

*The Natural Solution for Hot Water*

## System Features

- Fewer components for easy system installation
- Maintenance free drainback design for all climate conditions
- Works on sunny or cloudy days with electrical backup (*included*)
- Attractive skylight collector design
- Conforms to national plumbing, electrical and solar standards
- The only household appliance that will pay for itself several times during its useful life.
- Longlife non-corroding reservoir
- 10 Year Limited Warranty
- Exceeds Energy Star criteria, delivers maximum credit toward Energy Efficiency Compliance

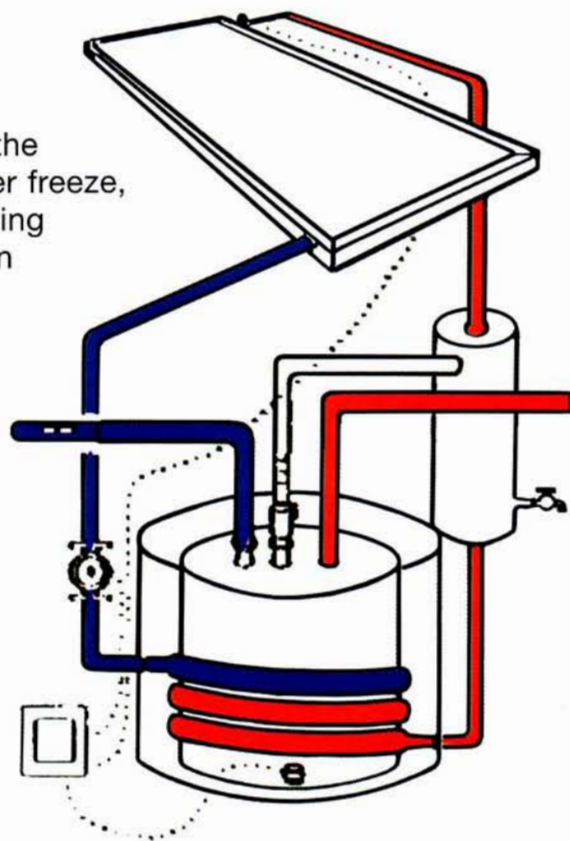


## The Drainback System

The Drainback System provides a reliable method for ensuring that the collectors and their pipelines never freeze,

by removing all the water from the collector(s) and piping when the system is not producing heat. Freeze protection is provided in the drainback system by design. Each time the pump shuts off the water in the collector(s) and piping drains in to the reservoir tank. The collector(s) and piping are installed to ensure complete drainage.

The differential temperature controller activates the pump when the collector(s) are hotter than the water in the bottom of the storage tank. The heat transfer fluid (potable water) circulates in a closed loop, never coming in direct contact with the potable water in the storage tank. The closed loop includes the collector(s), connecting piping, pump, reservoir tank, and heat exchanger.



**CONTACT YOUR LOCAL DEALER  
FOR MORE INFORMATION.**